

HOT LINES



Midwest Electric, Inc.

A Touchstone Energy® Cooperative 

January 2022

News about your community and cooperative

419.394.4110 | 1.800.962.3830
www.midwestrec.com

IMPORTANT MEMBER INFO

AUTOMATED ALERTS ADD VALUE

Maximize your all-in-one SmartHub account

Our goal is to provide members with superior service. Although that includes reliable and affordable electricity, it also means we strive to give you the tools you need to effectively manage your electric account, energy usage, and communication with your co-op. All this is possible with the SmartHub mobile app or desktop account.

This includes **Outage Alerts** and **High-Use Alerts (or Usage Alerts)**, both of which you can sign up for through SmartHub. Go to midwestrec.com > **My Home** > **Access My SmartHub Account** to learn how to register and manage your account.

Outage Alerts let you know when your power is out and give you an estimated restoration time. High-Use Alerts notify you when your home's energy use exceeds the "threshold" you set, allowing you to make adjustments to avoid a high electric bill. *You can choose whether to receive these alerts via email, text, or mobile feed.*

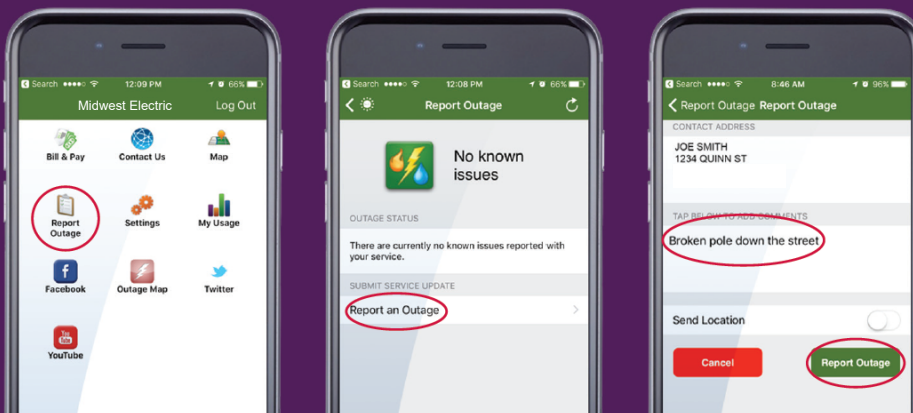
Create a SmartHub account at midwestrec.com or download the free mobile app. You can then use all these alerts by signing up for them. We are here if you need help!



No Power? Report it quick.



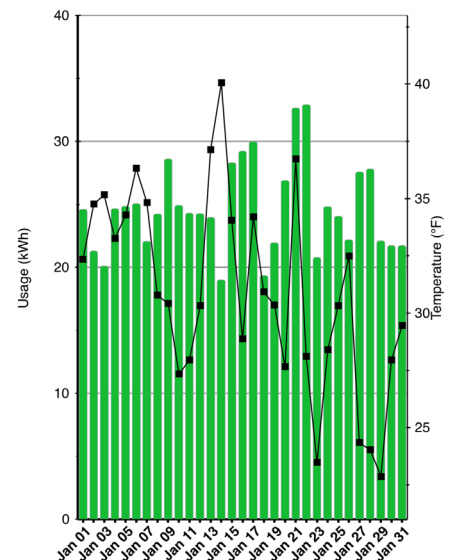
Members can use their SmartHub mobile app to report outages anywhere 24/7/365 in just seconds. No need to call us!



THE ABOVE SCREENSHOTS ARE FROM THE IPHONE VERSION OF THE SMARHUB MOBILE APP. SIMILAR OPTIONS ARE AVAILABLE ON THE ANDROID MOBILE APP AND ON THE WEBSITE.

Learn more at midwestrec.com/access-my-smarthub-account

Want high-use alerts for energy consumption?



Set them up in your SmartHub account, so you're notified when your home's energy use exceeds the "threshold" you set. You can then make adjustments to avoid a high electric bill.

CALLING ALL 2022 GRADS:



Need cash for college?
We're giving away
\$11,000
in scholarships!

**Must be a child of a Midwest Electric member and apply by Jan. 14.*

TO OBTAIN AN APPLICATION:

- Visit www.midwestrec.com > My Community > Scholarships.
- Email jjohns@midwestrec.com or call our office.
- See your school guidance counselor.



CURIOUS WHY YOUR WINTER ELECTRIC USAGE IS SO HIGH?

Consider using our online energy audit software or one of our in-person home audit methods:

- **Over-the-phone** – simply call us at 1-800-962-3830 for free, customized advice.
- **Basic Audit** – we will do a free walk-through at your home or business and identify potential savings. We provide an extensive follow-up report with specific recommendations to help you prioritize opportunities.

TAX NOTICE ON THIS MONTH'S BILL

Your December electric bill will include information to use in your income tax filing: your total annual contribution to the Midwest Electric Community Connection Fund. This will be on the left side of your bill, about halfway down, and will say "YTD ROUNDUP AMOUNT" next to the dollar amount (typically between \$4-\$12). This is tax deductible and represents the 12-month total of your monthly round-up contributions to benefit our local community. Thank you for your generosity!



We also offer numerous **rebates** on everything from new refrigerators to electric vehicle charging stations! Need help paying for air sealing or insulation? We've got you covered! Visit midwestrec.com/rebates.

Find details and DIY resources to help you reduce your winter electric bill at midwestrec.com. Click the "My Energy" tab, then "Energy Audits and Tips."



GET A NEW PHONE NUMBER, CREDIT CARD, OR EMAIL? PLEASE LET US KNOW!

Call 800-962-3830 or log into SmartHub to update your contact information so we can notify you for planned outages, patronage cash back, and more.



Nobody wins when you drive distracted. Protect yourself & our electricity.
#itcanwait #safetyfirst

Community Calendar

- ◆ Dec. 23-24 **Office closed for Christmas**
- ◆ Dec. 30 **Office closes early at 11:30 am**
- ◆ Dec. 31 **Office closed for New Years**
- ◆ Jan. 15 **Dueling Pianos**, The Overdrive, Celina, 419-925-9999
- ◆ Jan. 21 **Rodney Carrington**, Lima Civic Center, 419-224-1552
- ◆ Jan. 22 **Lima Symphony "Bach by Candlelight"** at Trinity United Methodist Church, Lima, 7:30 pm, limasymphony.com/bachbycandlelight
- ◆ Jan. 23 **Lima Symphony "Bach by Candlelight"** at Immaculate Conception Church, Celina, 4 pm, limasymphony.com/bachbycandlelight
- ◆ Jan. 28-29 **Blast Off Winter Weekend**, music includes Sideline, bluegrass, workshops, games, Moon City Music & Event Center, Wapakoneta, mooncityeventcenter.com
- ◆ Jan. 29 **Night Ranger**, Lima Civic Center, 419-224-1552