

# HOT LINES



**Midwest Electric, Inc.**

A Touchstone Energy® Cooperative

419.394.4110; 1.800.962.3830  
www.midwestrec.com

April 2018

News about your community and your cooperative.

## IMPORTANT MEMBER INFO

### March bill includes your 2017 patronage

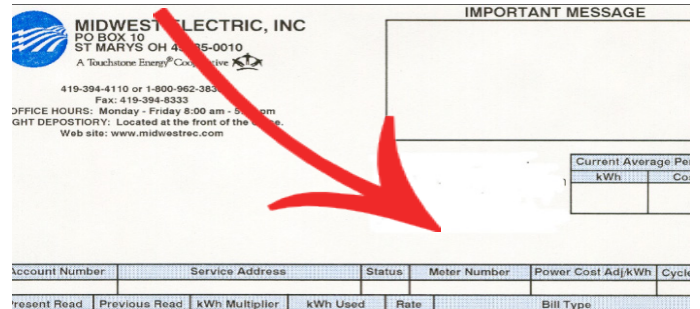
How much of Midwest Electric's margins from last year will YOU receive?

Look for that amount on your enclosed electric bill. Your electric bill this month lists the amount allocated to your patronage capital account based on last year's margins. The information will appear near the upper right corner of the bill, under the Message box.

As a Midwest Electric member, you have a share in the earnings of your not-for-profit electric cooperative. Your cooperative's electric rates are set to bring in enough money to pay operating costs, make payments on any loans and provide an emergency reserve. Revenues in excess of the cost of doing business are returned to members like you as "patronage capital."

Patronage capital payments typically occur in December, if the cooperative's financial standing is sufficient. Last

### YOUR 2017 PATRONAGE CAPITAL ALLOCATION AMOUNT IS LISTED HERE ON THIS MONTH'S BILL



December, the cooperative returned more than \$1.2 million in patronage capital to members based on margins and kWh sales from 2000 and 2001.

Our margins, or money left after all expenses have been paid, are allocated to each member based on the total amount each member paid for electricity for the year.

Patronage capital represents tangible proof of your equity ownership in your cooperative. A portion of your electric payments is used by the cooperative as working capital and invested in the cooperative's electric distribution system. After a period of time, the investment is returned to you.

The amount allocated to you from 2017 is payable at a future date.



**Midwest Electric, Inc.**

A Touchstone Energy® Cooperative

## Value and Stability

# No rate increase since 2010

# Member Survey

We Want To HEAR from YOU!



Your feedback helps us improve our service to you.

In April, Midwest Electric will be working with NRECA Market Research Services to complete a member satisfaction survey.

The surveys will be both by phone and e-mail, but not everyone will be contacted. If you are contacted, we would greatly appreciate a few minutes of your time to share your opinions of the cooperative.

All information is confidential.

## Community Calendar

**March 2-3:** Bluffton Community Craft, Garage Sale & BBQ, The Centre of Bluffton (223-2757)

**March 3:** Maple Syrup Festival, 12-5pm, Mclean Teddy Bear Park, Lima (221-1232)

**March 3:** Cinderella, Niswonger Performing Arts, Van Wert (238-6722)

**March 10:** Lima Irish Parade, Downtown, 12-1pm (860-0072)

**March 16-18:** Grease, (Crescent Players), St. Henry High School (crescentplayers.com)

**March 18:** St. Patrick's Day 5K Run/Walk, St. Henry (733-7140)

**March 24:** Kenny G, Niswonger Performing Arts, Van Wert (238-6722)

**March 25:** Blues Society Jam Session, 5-9pm Knights of Columbus, Lima (234-8174)

## Free energy audits

Our professional energy audit features a blower door test and infrared thermal scan to pinpoint energy saving opportunities for your home, and a detailed follow-up report. If you act on the audit and do at least \$200 in energy efficiency improvements after the audit, then there is no cost for the energy audit.

We also have a basic walk-through audit at no charge.

Call today, 1-800-962-3830.

## Annual Meeting

**Saturday, June 2nd, at St. Marys Memorial High School, State Route 66 and U.S. 33**

**8:15 a.m.**  
Registration, breakfast, and activities begin

**9:15 a.m.**  
Business meeting

- **FREE** breakfast buffet
- \$3000 in cash prizes
- Energy efficiency and renewable energy booths
- Q & A with co-op leaders
- Trustee election results
- Learn about the power grid and how it impacts you
- Children's activities include bounce land, games, and more

